

Swivel Replacement – Fully Rotational

NOTE: We recommend the use of a liquid thread locking material, such as Loc-Tite, when reinstalling any fastener used in this chair. Although locking t-nuts and hex nuts were used in the original assembly, these t-nuts and hex nuts no longer retain their original locking ability once the original bolt or screw is removed.



1.

Place chair on bench, up side down, if possible. Using two 7/16" wrenches, remove the four bolts holding the base to the swivel. Remove the base and set aside, right side up, away from the work area.



2.

Rotate the swivel until the bolts that attach it to the seat are visible. Using a 7/16" wrench, remove these four bolts. Remove old swivel mechanism.



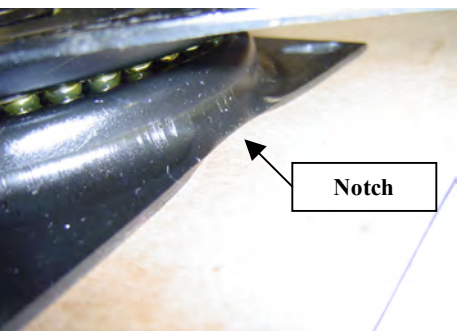
3A.

Position new swivel mechanism over threaded inserts on seat bottom. Depending on the swivel type supplied with your stool, locate one of the following marked references for the proper positioning of the new swivel: stamped "REAR" on lower flange of swivel, or.....



3B.

stamped "FRONT" on upper body of swivel, or.....



3C.

notch on edge of swivel- against the seat, facing forward.
If your swivel has a large hex nut in the center, this nut must face away from the chair seat.



4.

Insert the four longer bolts through the mounting holes in the swivel and into threaded inserts in the seat bottom. Tighten all four bolts securely.



5.

Next, place the inverted base over the remaining holes of the swivel. Insert the four shorter bolts up through the slotted holes of the base side of the swivel. NOTE: If your base has an extended footrest, make certain that the extended portion faces the front of the chair.



6.

Install a self-locking nut onto each bolt to secure the base to the swivel. Using two 7/16" wrenches, tighten these four bolts and nuts securely.

Base Disassembly/Swivel Replacement L90 Style Base

Tools needed: 7/16" socket and ratchet, 7/16" wrench, 9/16" socket, 9/16" wrench.

1.



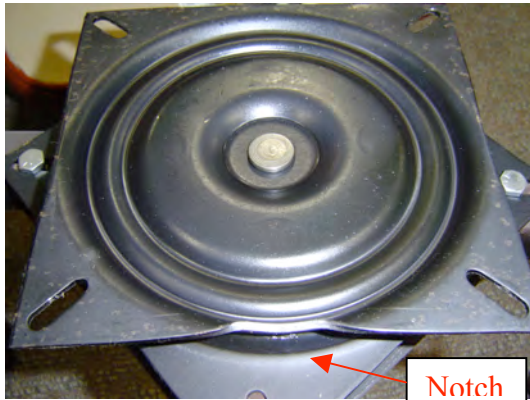
Lay chair upside down on a clean, smooth surface. Rotate chair base to expose the (4) hex head 7/16" bolts that secure the swivel to the chair seat. Remove these (4) bolts.

2.



Remove the (4) 7/16" bolts and hex nuts that bolt through the bottom side of the swivel, top base plate, square tubular leg frame, and lower base plate.

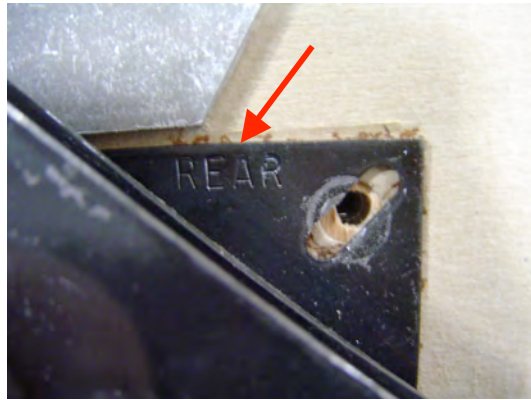
3.



Reinstall swivel to base plates and square tubular leg frame. Note that the side of the swivel with the notch must face opposite from the legs.

9/2007

4.



Reposition the assembled base to the bottom of the chair seat. Note that the stamped "REAR" in the swivel must face to the rear of the chair seat. Reinstall the (4) 7/16" hex head bolts and tighten securely.